

Guiding question: Can you describe a set of data using Mean, Median, Mode, and Range?

P. 64-65 Mean, Median, Mode, and Range

Pg. 64

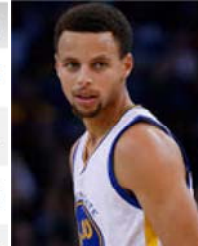
Warm-up: Determine how many point Stephen Curry would need to score in the next game to increase his **average points per game to 40.**

$$\frac{229 + X}{7} = 40$$

$$229 + X = 280$$

$$X = 51$$

DATE	OPP	PTS
Sat 2/27	@ OKC	46
Thu 2/25	@ ORL	51
Wed 2/24	@ MIA	42
Mon 2/22	@ ATL	36
Sat 2/20	@ LAC	23
Fri 2/19	@ POR	31



X



Statistics – Measures of Central Tendency

	How many minutes per day do you talk on the phone?	How many texts do you send each day?	How many hours per day do you watch TV?
1			
2			
3			
4			
5			
6			
7			
	List values from least to greatest.	List values from least to greatest.	List values from least to greatest.
	Mean:	Mean:	Mean:
	Median:	Median:	Median:
	Mode:	Mode:	Mode:
	Range:	Range:	Range:

*Guiding question: Can you describe a set of data using Mean, Median, Mode, and Range?*

Homework --

Finish Worksheets:

... Measures of Central Tendencies

... Statistics Homework (from yesterday)