

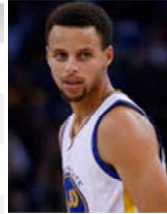
Guiding question: Can you describe a set of data using Mean, Median, Mode, and Range?

P. 64-65 Mean, Median, Mode, and Range

Warm-up: Determine Stephen Curry's **average points per game** during the span of games listed.

Pg. 64

DATE	OPP	PTS
Sat 2/27	@ OKC	46
Thu 2/25	@ ORL	51
Wed 2/24	@ MIA	42
Mon 2/22	@ ATL	36
Sat 2/20	@ LAC	23
Fri 2/19	@ POR	31



ave = 38.16

median = 39

No mode

range = 28

23, 31, 36, 42, 46, 51

$$\frac{(36 + 42)}{2}$$

Write the following Statistics definitions.

Pg. 65

MEAN: average ; add * ÷ * of *s

MEDIAN: the middle number

MODE: most often (repeats)

RANGE: difference (subtract) | largest - smallest
(spread)

1. Find the Mean, Median, Mode, and Range from the set of data.

Pg. 65

12, 9, 9, 15, 18, 10, 7

Values ordered from least to greatest

7, 9, 9, 10, 12, 15, 18

Mean 11.4

Median 10

Mode 9

Range 11

2. Mary ran the 100-meter dash in 6 track meets this season. Her times were 13.2 sec, 12.9 sec, 12.5 sec, 12.8 sec, 13.3 sec, and 12.1 sec. What was her **average** time?

Pg. 65

mean = 12.8 sec.

3. During a 5-year span, the number of wins by a school basketball team is shown below:

Year	Wins
2011	19
2010	12
2009	22
2008	14
2007	19

What was the **average** number of wins per year over the 5-year span?

mean = 17.2 wins

4. The monthly rainfall for a U.S. city for the first ten months is given in the table below.

Month	Jan	Feb	Mar	Apr	May	Jun	July	Aug	Sep	Oct
Inches	2.9	2.5	3.3	4.2	4.8	4.1	3.3	3.5	3.1	4.3

Values ordered from least to greatest 2.5, 2.9, 3.1, 3.3, 3.3, 3.5, 4.1, 4.2, 4.3, 4.8

- a) What was the **median** rainfall in inches over the 10 months? 3.4 in.
- b) What was the **mode** in inches? 3.3 in.
- c) What was the **range** of rainfall in inches? 2.3 in.

What if you wanted to get a certain average?

5. Brett has earned a score of 80, 93, 91, and 65 on his last 4 math tests. What grade does he need on his 5th test to have an average of 85 on his tests?

$$5. \frac{80 + 93 + 91 + 65 + X}{5} = 85.5$$

$$329 + X = 425$$

$$X = 96$$

Guiding question: Can you describe a set of data using Mean, Median, Mode, and Range?

Homework - Complete front side!